



*We Don't Build  
Log Homes,  
We Build  
Relationships.*

# Log Cabins FOR Less

## 1 Level Floor Plans

---

(423) 636-0045 ■ [www.logcabinsforless.com](http://www.logcabinsforless.com)

# Blue Ridge



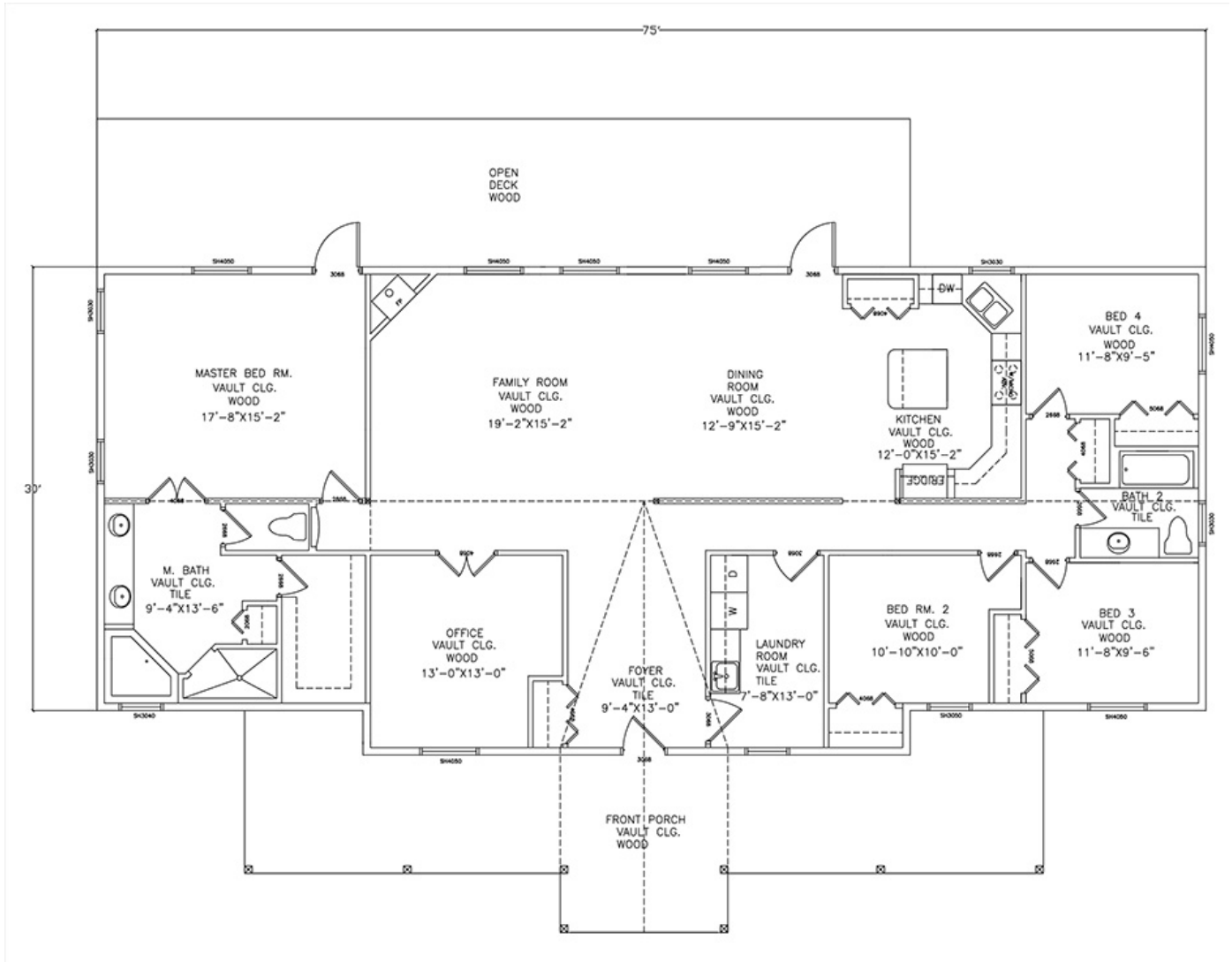
**1 Level ■ 4 Bedroom ■ 2 Bath**

**75' long x 30' wide ■ Total Living 2,360 sq. ft.**

**Smoky Mountain Collection ■ Call for Pricing**

**Heritage Collection ■ Call for Pricing**

**Logs Only System ■ Call for Pricing**

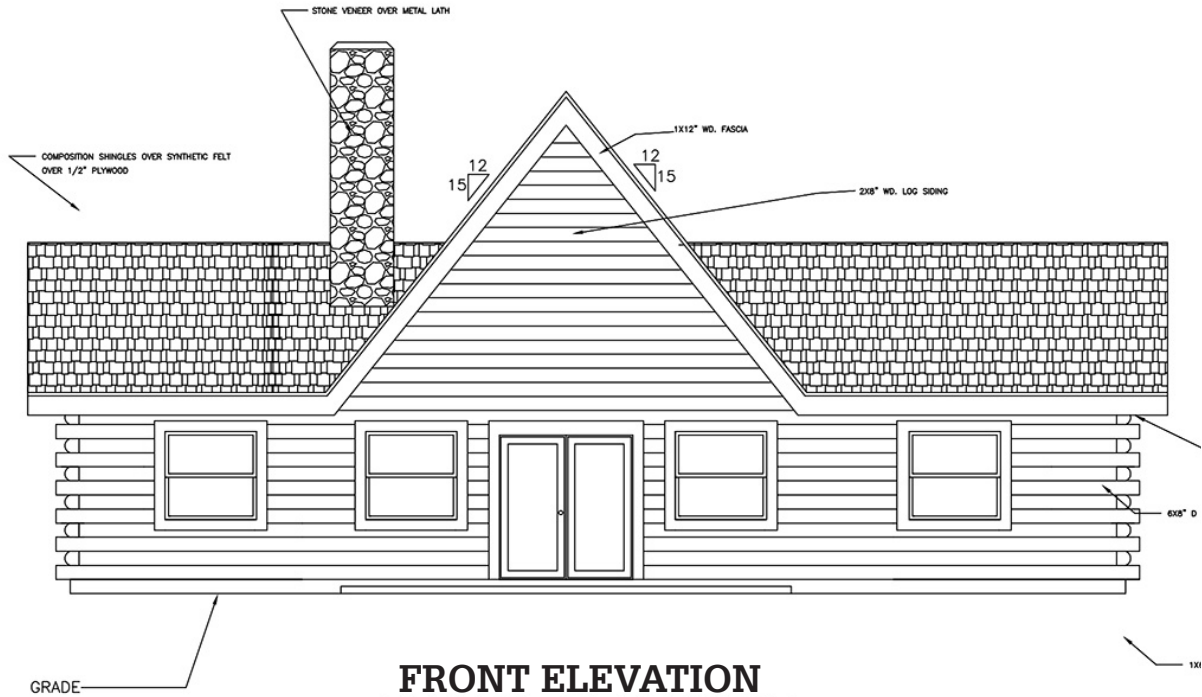


**MAIN FLOOR PLAN**



**RIGHT ELEVATION**

# Crab Orchard



**1 Level ■ 2 Bedroom ■ 2 Bath**

**50' long x 30' wide ■ Total Living 1,500 sq. ft.**

**Smoky Mountain Collection ■ Call for Pricing**

**Heritage Collection ■ Call for Pricing**

**Logs Only System ■ Call for Pricing**



# Cumberland



FRONT ELEVATION

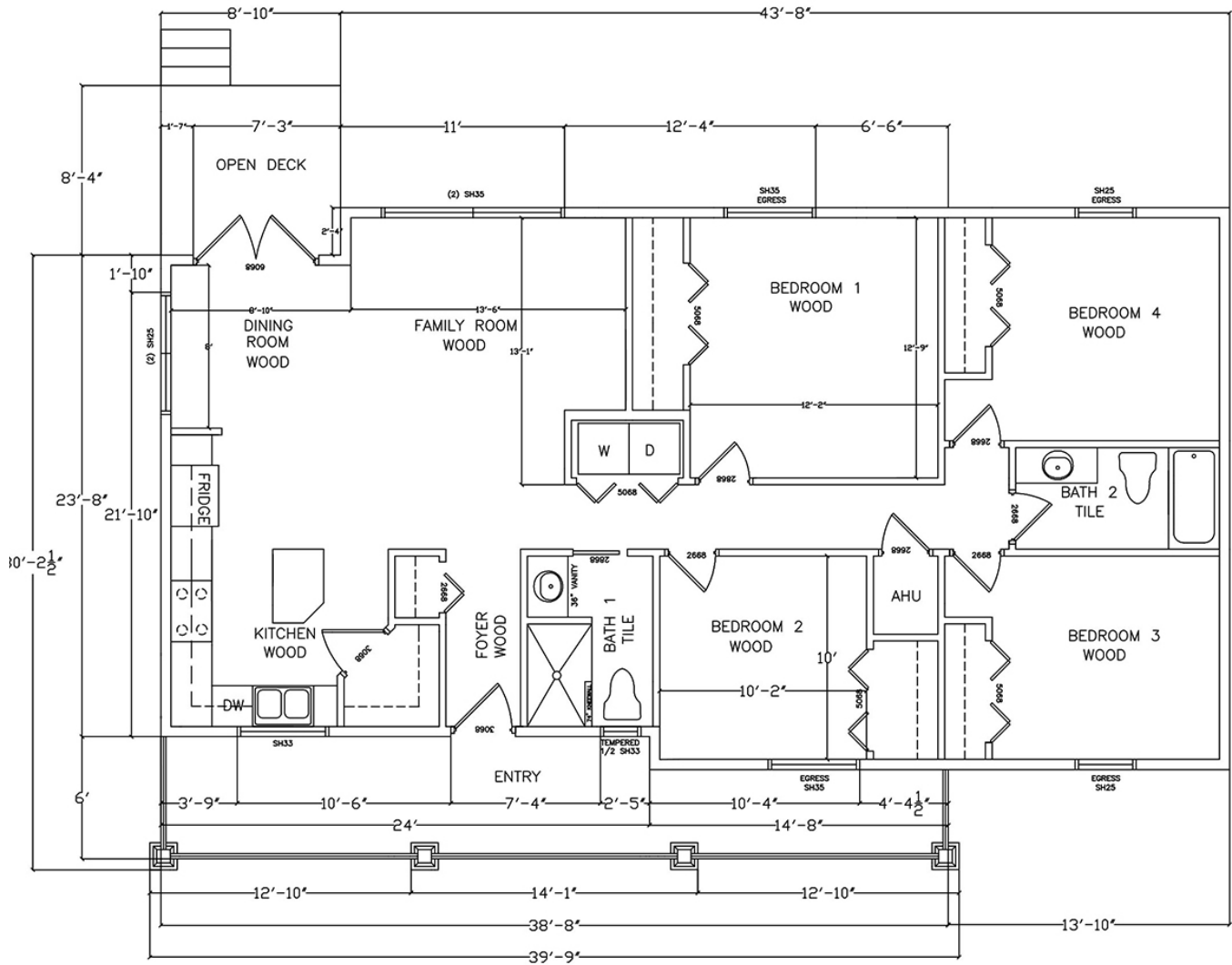
**1 Level ■ 4 Bedroom ■ 2 Bath**

**52' long x 27' wide ■ Total Living 1,392 sq. ft.**

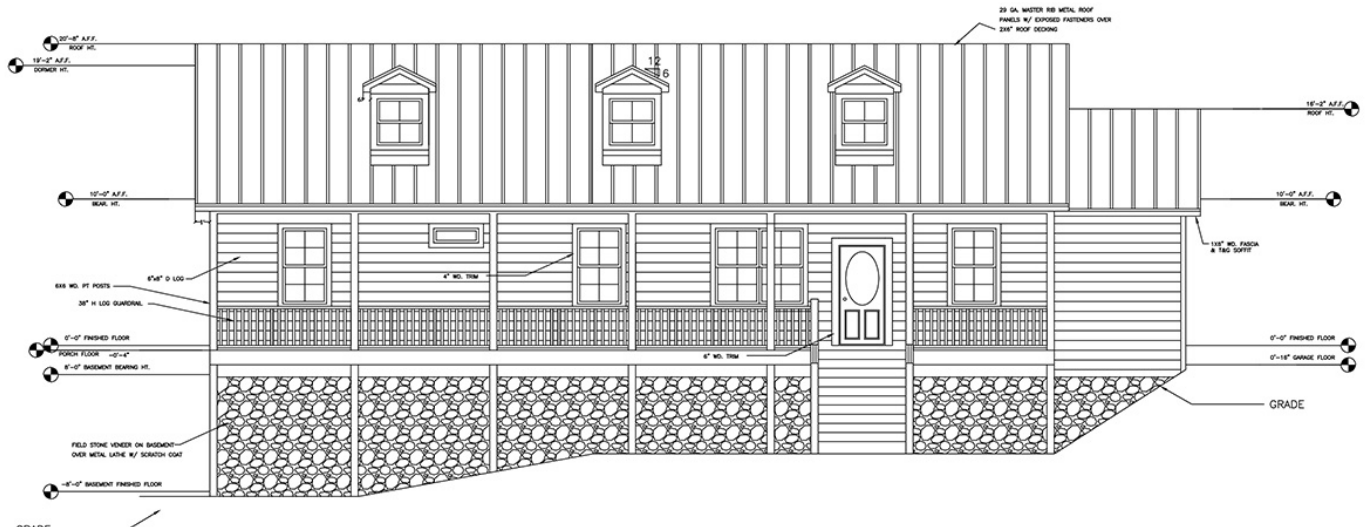
**Smoky Mountain Collection ■ Call for Pricing**

**Heritage Collection ■ Call for Pricing**

**Logs Only System ■ Call for Pricing**



**MAIN FLOOR PLAN**



**FRONT ELEVATION**

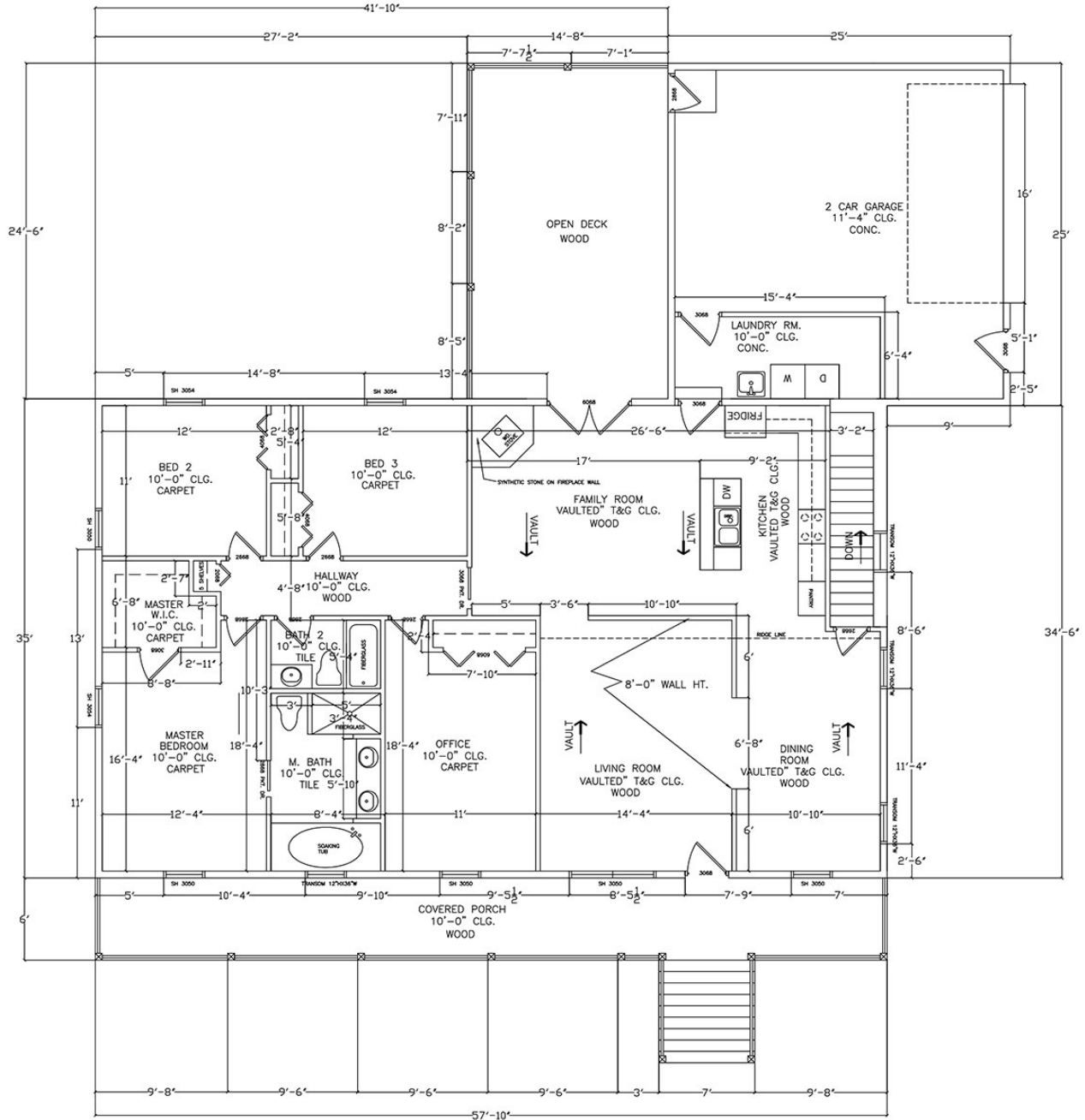
**1 Level ■ 3 Bedroom ■ 2 Bath**

**58' long x 35' wide ■ Total Living 1,958 sq. ft.**

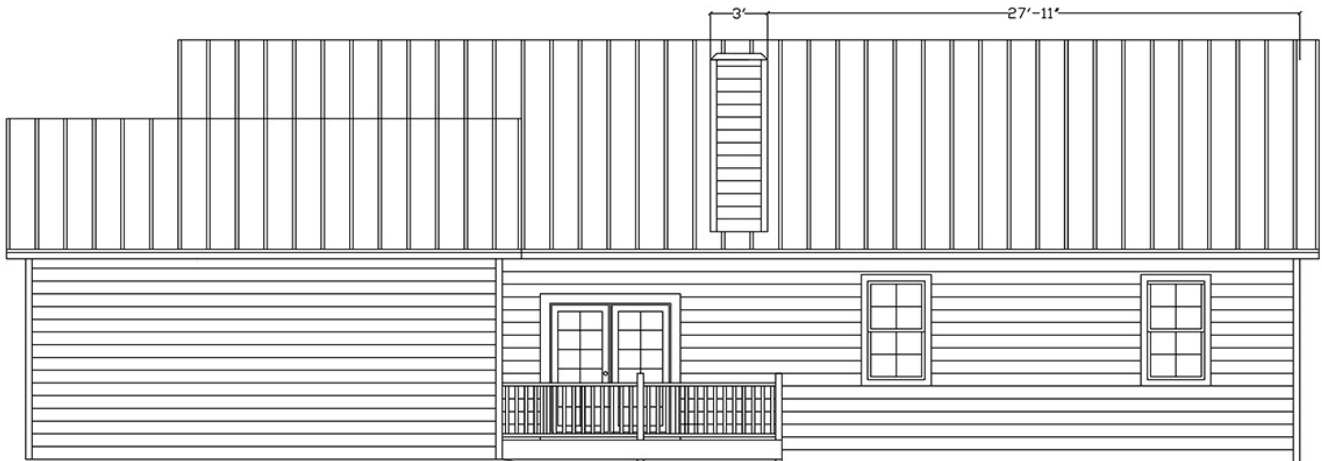
**Smoky Mountain Collection ■ Call for Pricing**

**Heritage Collection ■ Call for Pricing**

**Logs Only System ■ Call for Pricing**



**MAIN FLOOR PLAN**



**REAR ELEVATION**

# Lakeland



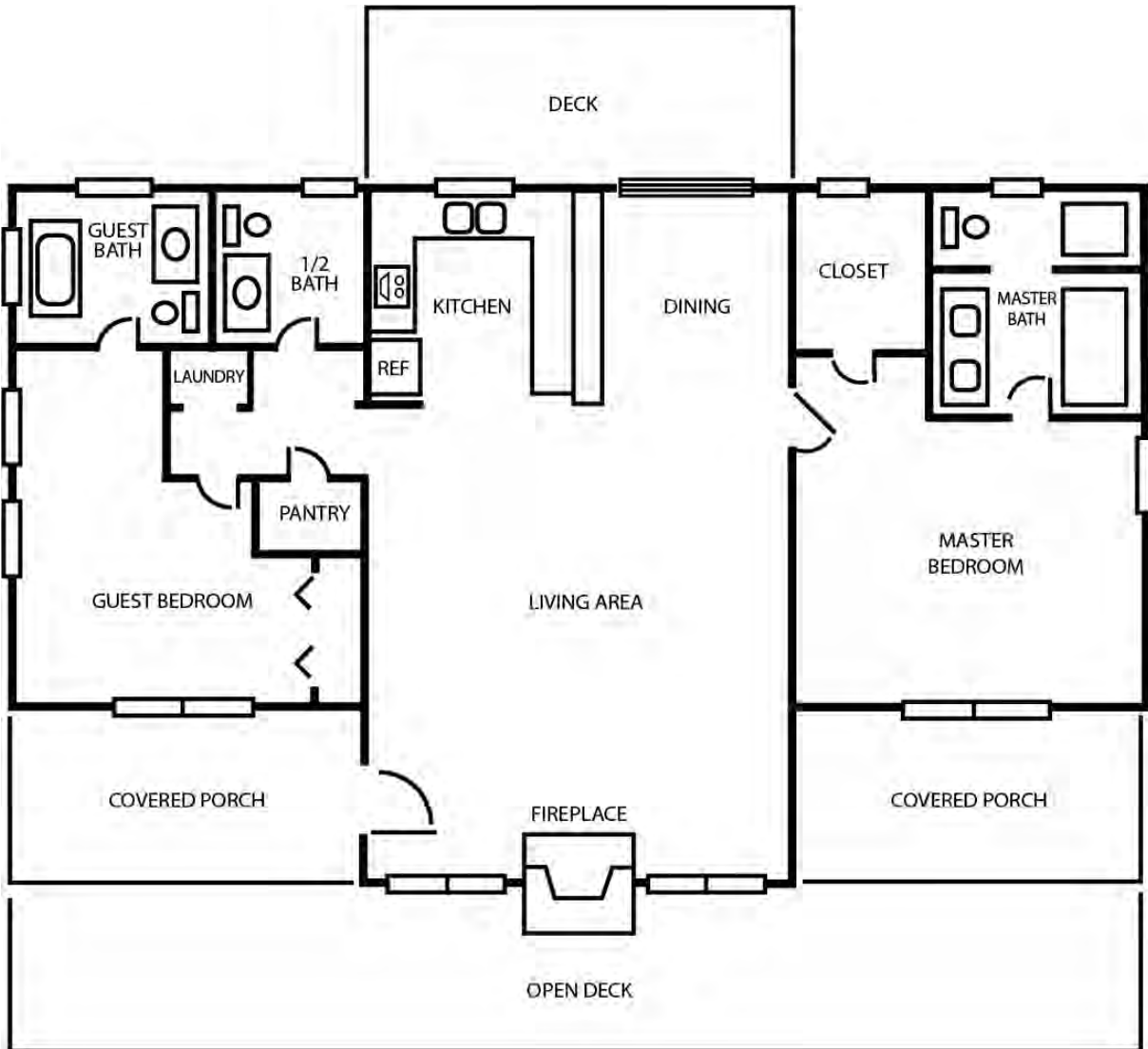
**1 Level ■ 2 or 3 Bedroom ■ 2 Bath**

Total Living 1,400 sq. ft.

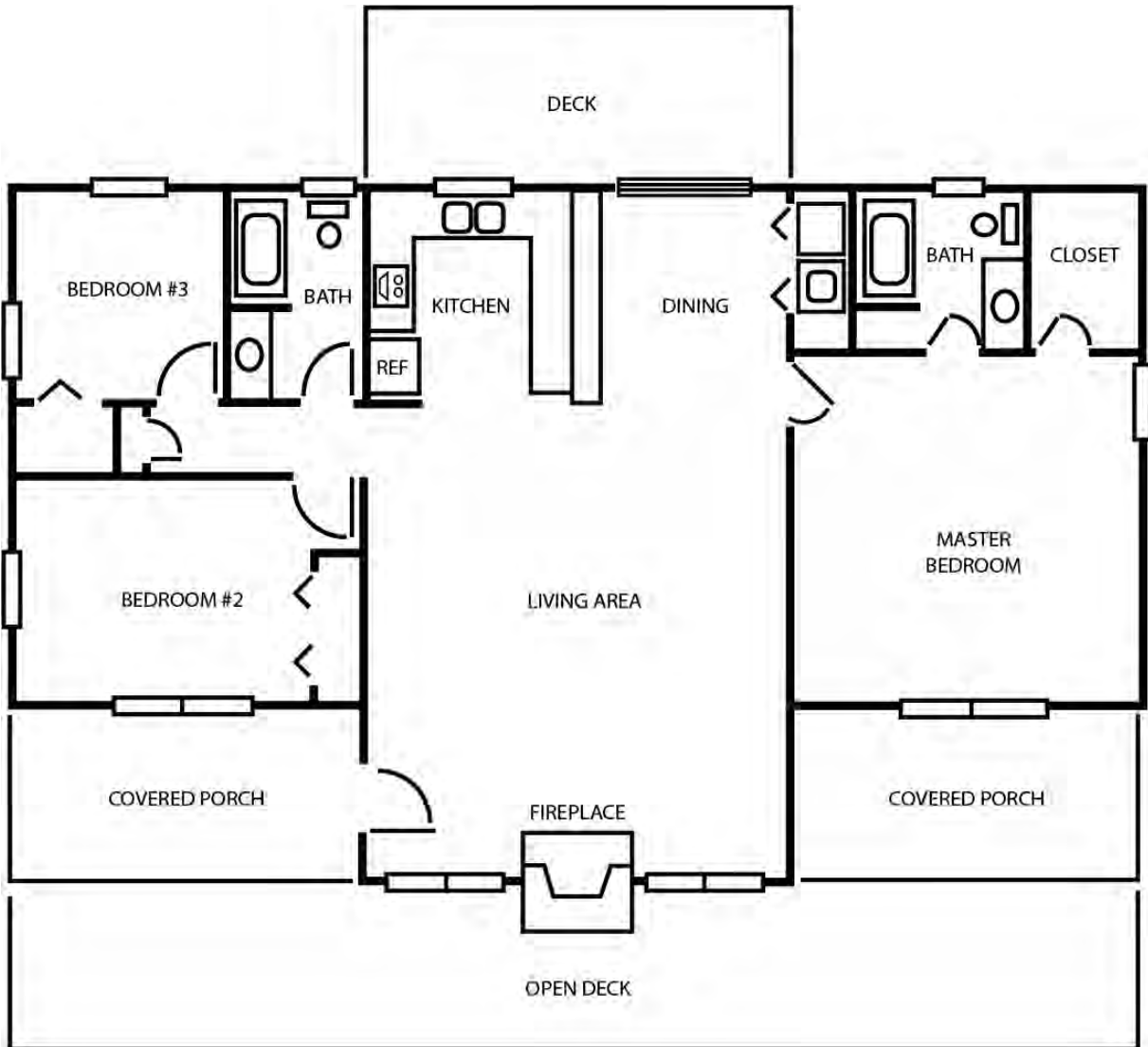
**Smoky Mountain Collection ■ Call for Pricing**

**Heritage Collection ■ Call for Pricing**

**Logs Only System ■ Call for Pricing**



**2 BEDROOM MAIN FLOOR PLAN**



**3 BEDROOM MAIN FLOOR PLAN**

# Little Bear



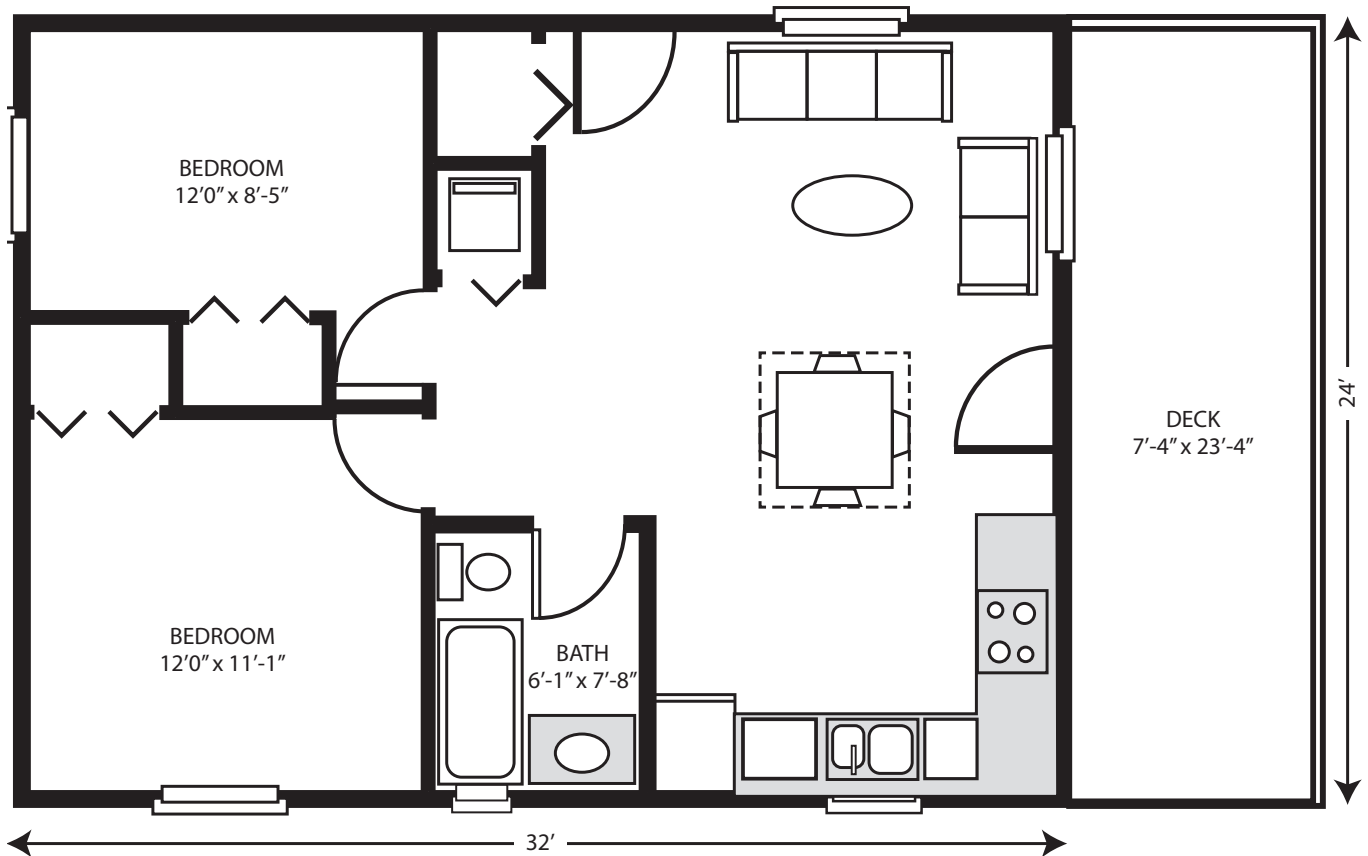
**1 Level ■ 2 Bedroom ■ 1 Bath**

**32' long x 24' wide ■ Total Living 768 sq. ft.**

**Smoky Mountain Collection ■ Call for Pricing**

**Heritage Collection ■ Call for Pricing**

**Logs Only System ■ Call for Pricing**



**MAIN FLOOR PLAN**

# Pine Grove



**1 Level ■ 2 Bedroom ■ 1 Bath**

**36' long x 26' wide ■ Total Living 936 sq. ft.**

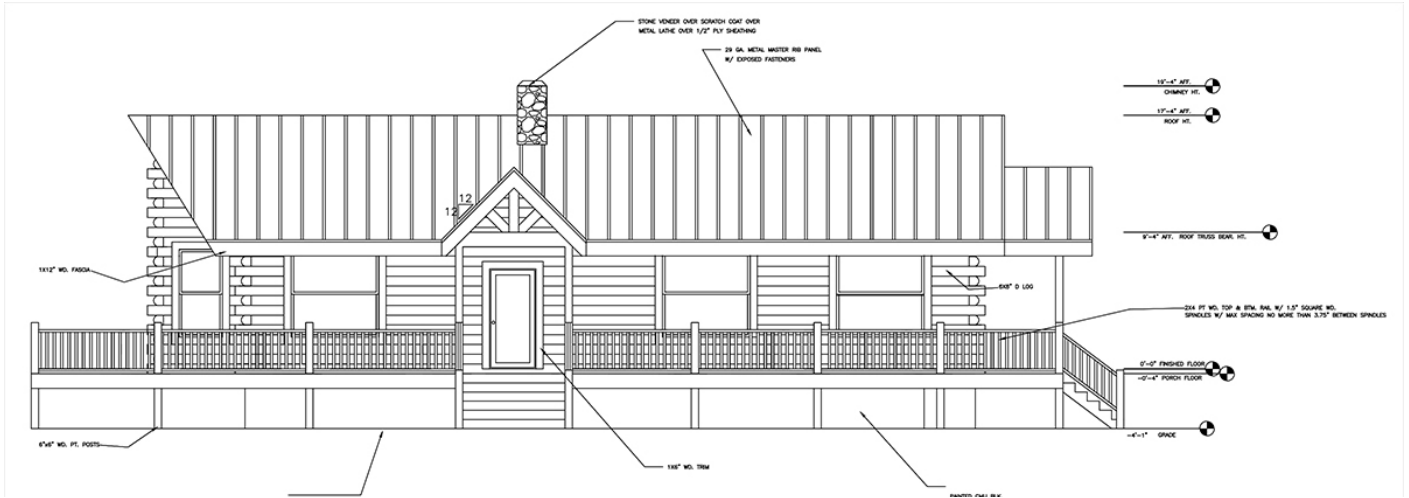
**Smoky Mountain Collection ■ Call for Pricing**

**Heritage Collection ■ Call for Pricing**

**Logs Only System ■ Call for Pricing**



# Pine Oak



**FRONT ELEVATION**

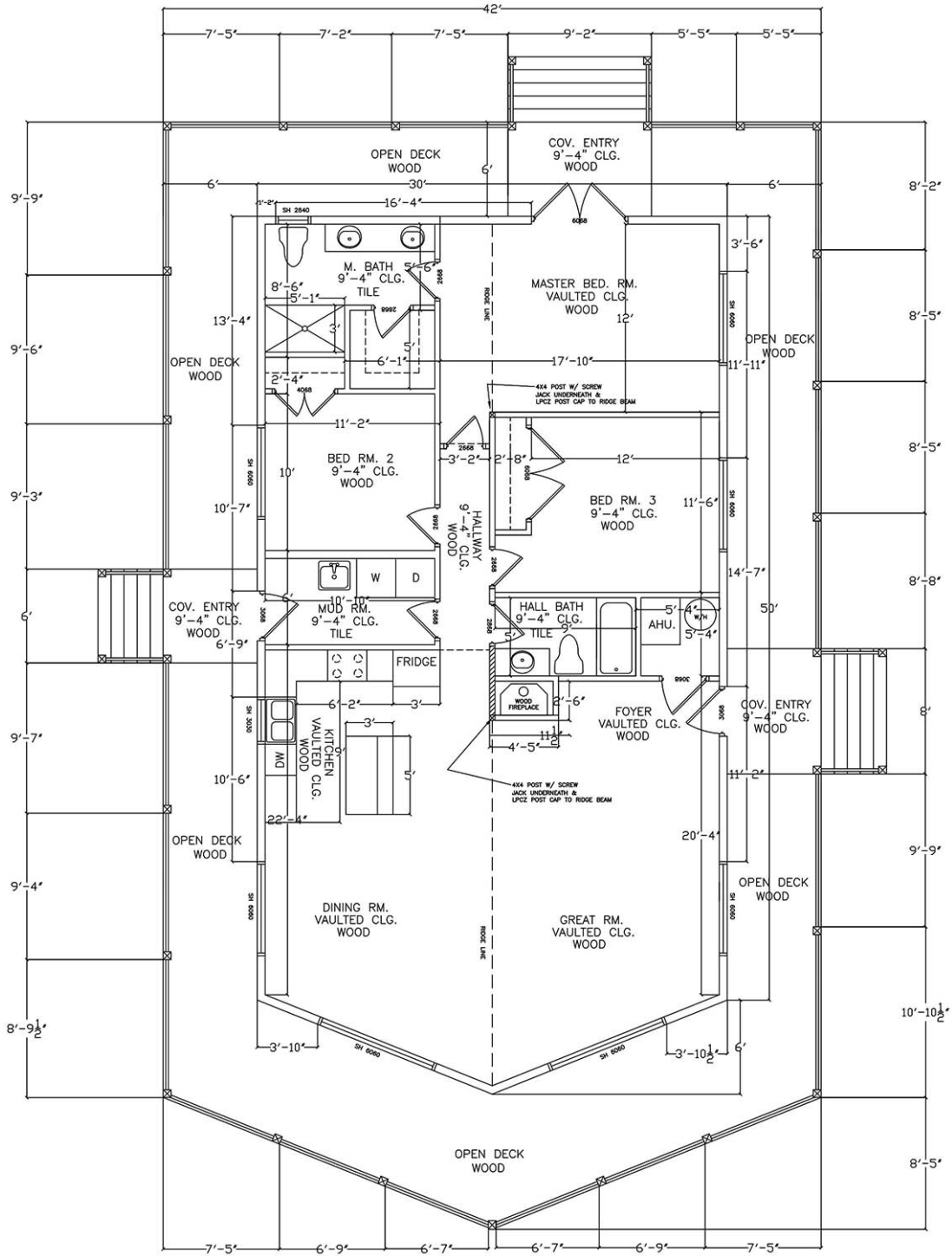
**1 Level ■ 3 Bedroom ■ 2 Bath**

**50' long x 30' wide ■ Total Living 1,590 sq. ft.**

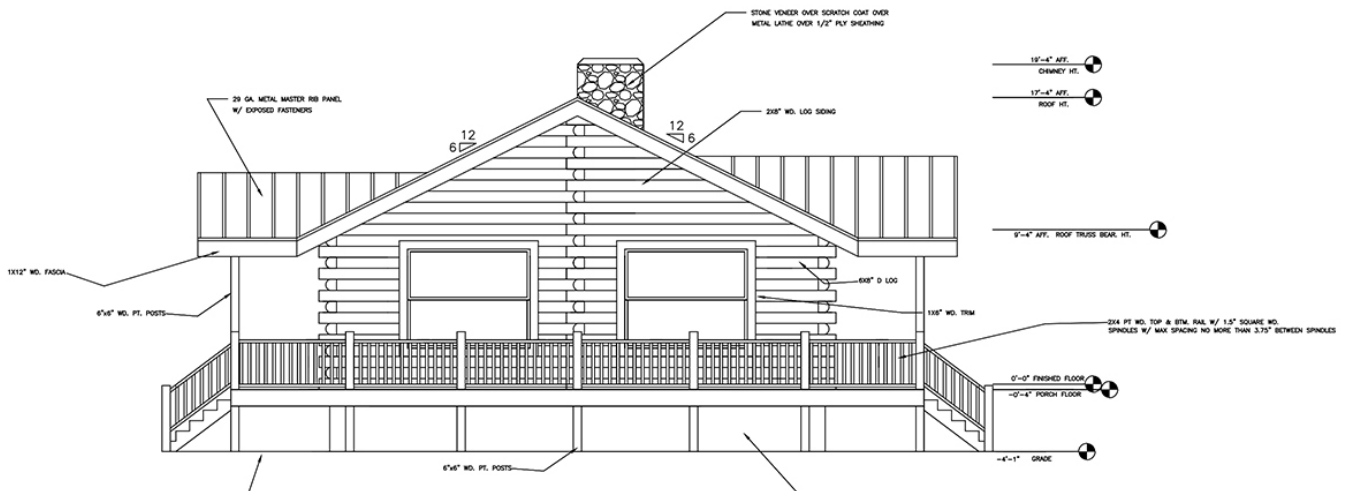
**Smoky Mountain Collection ■ Call for Pricing**

**Heritage Collection ■ Call for Pricing**

**Logs Only System ■ Call for Pricing**



**MAIN FLOOR PLAN**



**LEFT ELEVATION**

# Rocky Top



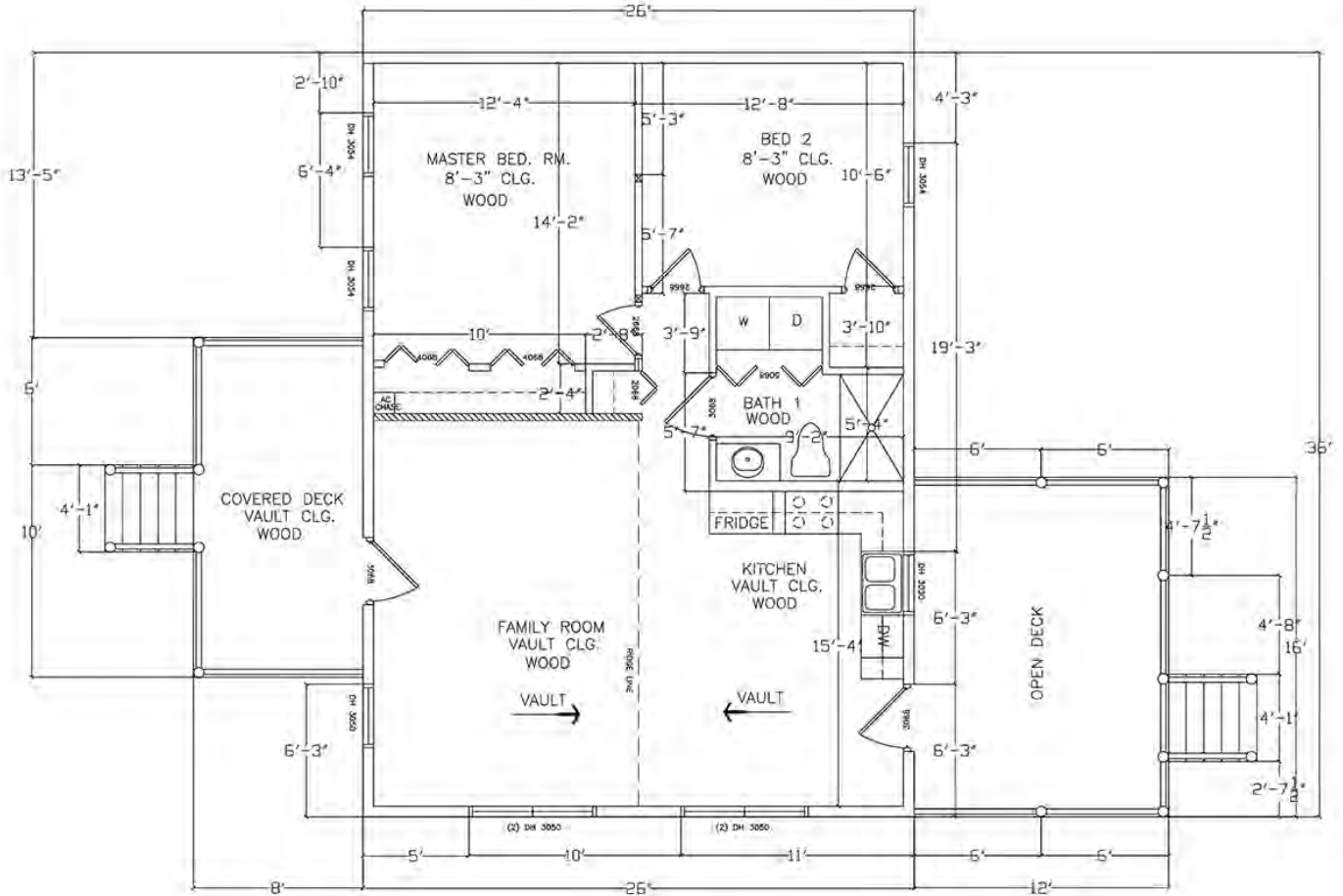
**1 Level ■ 2 Bedroom ■ 1 Bath**

**36' long x 26' wide ■ Total Living 936 sq. ft.**

**Smoky Mountain Collection ■ Call for Pricing**

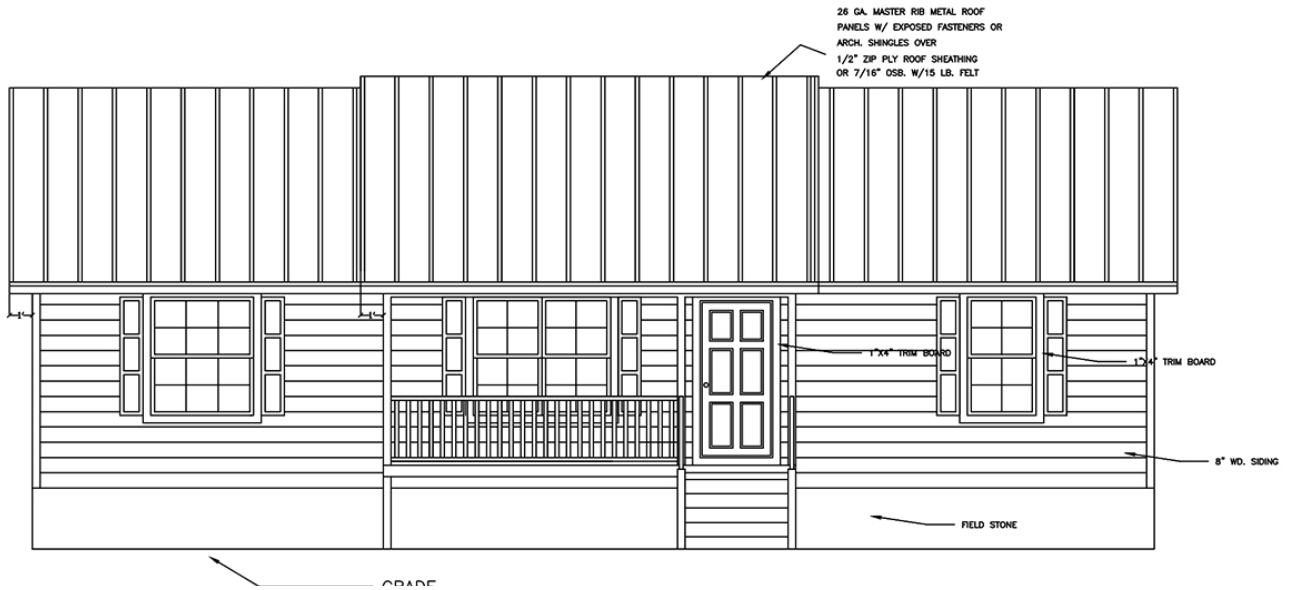
**Heritage Collection ■ Call for Pricing**

**Logs Only System ■ Call for Pricing**



**MAIN FLOOR PLAN**

# Sycamore



**FRONT ELEVATION**

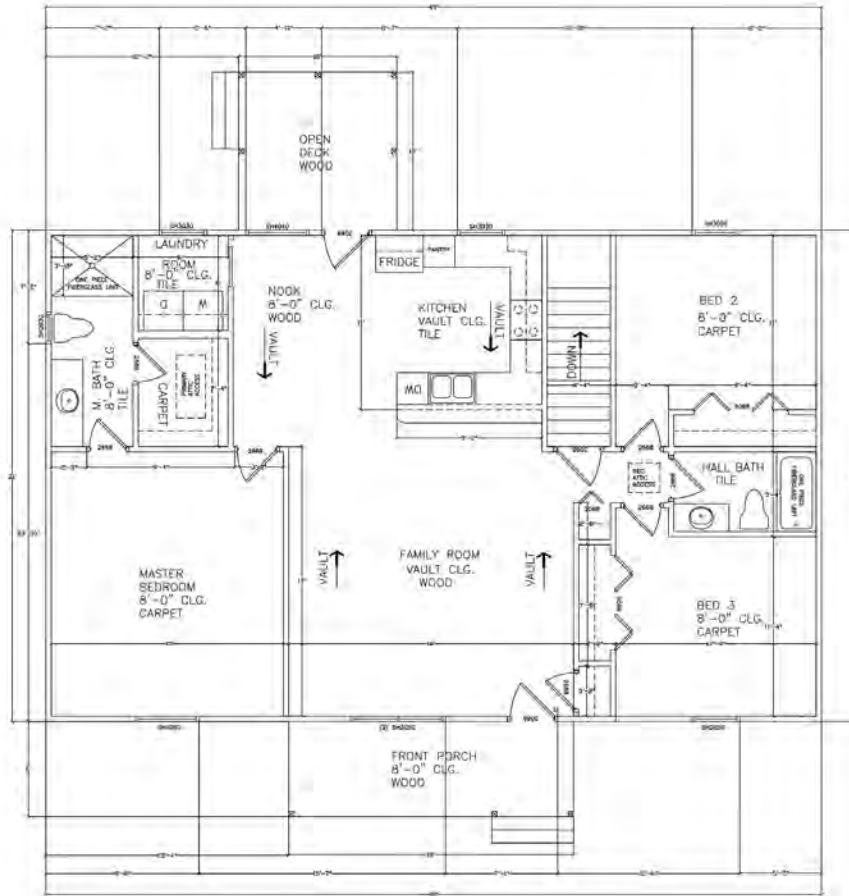
**1 Level ■ 3 Bedroom ■ 2 Bath**

**49' long x 31' wide ■ Total Living 1,519 sq. ft.**

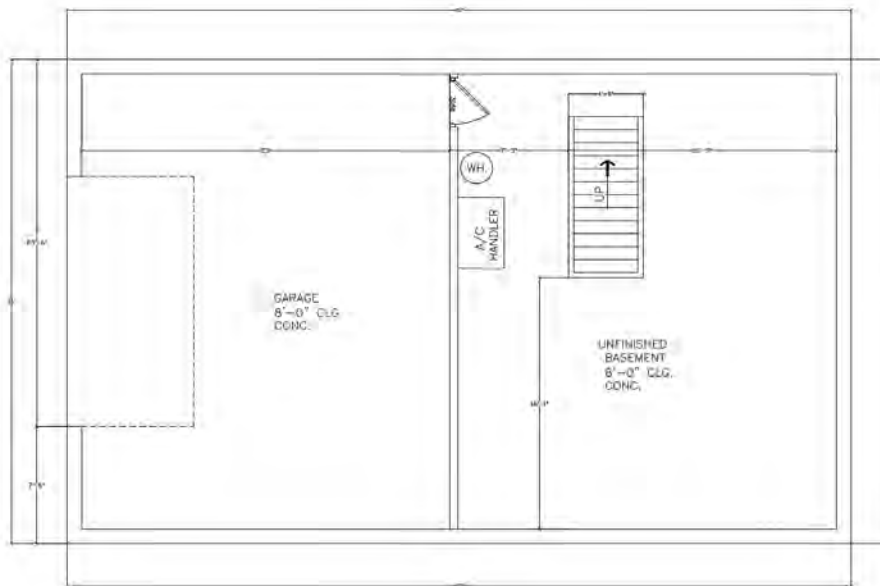
**Smoky Mountain Collection ■ Call for Pricing**

**Heritage Collection ■ Call for Pricing**

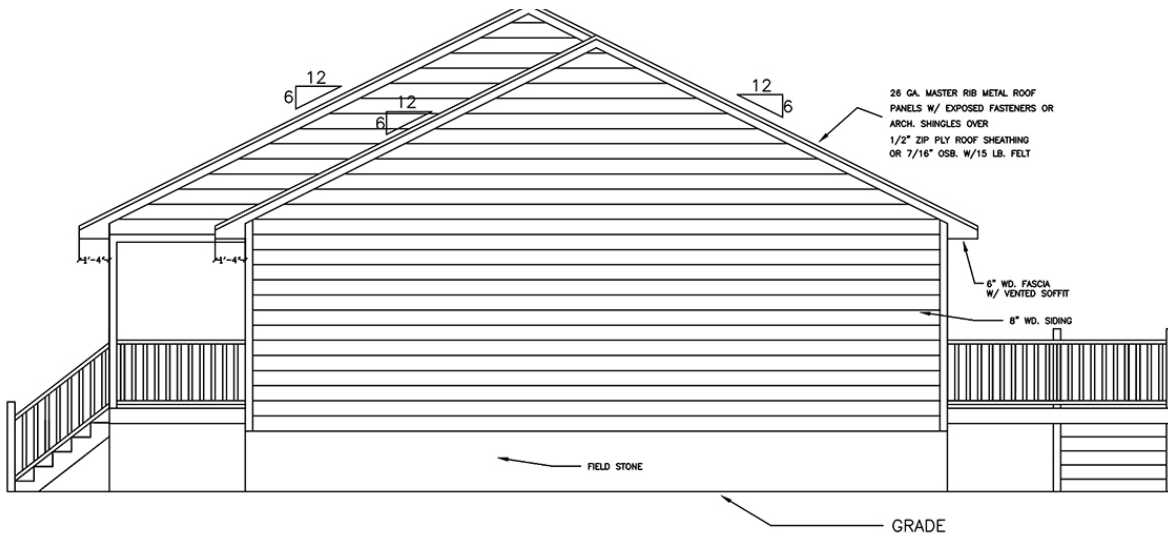
**Logs Only System ■ Call for Pricing**



**MAIN FLOOR PLAN**



**BASEMENT FLOOR**



**RIGHT ELEVATION**



---

# Trout Run

---



**1 Level ■ 2 Bedroom ■ 1 Bath**

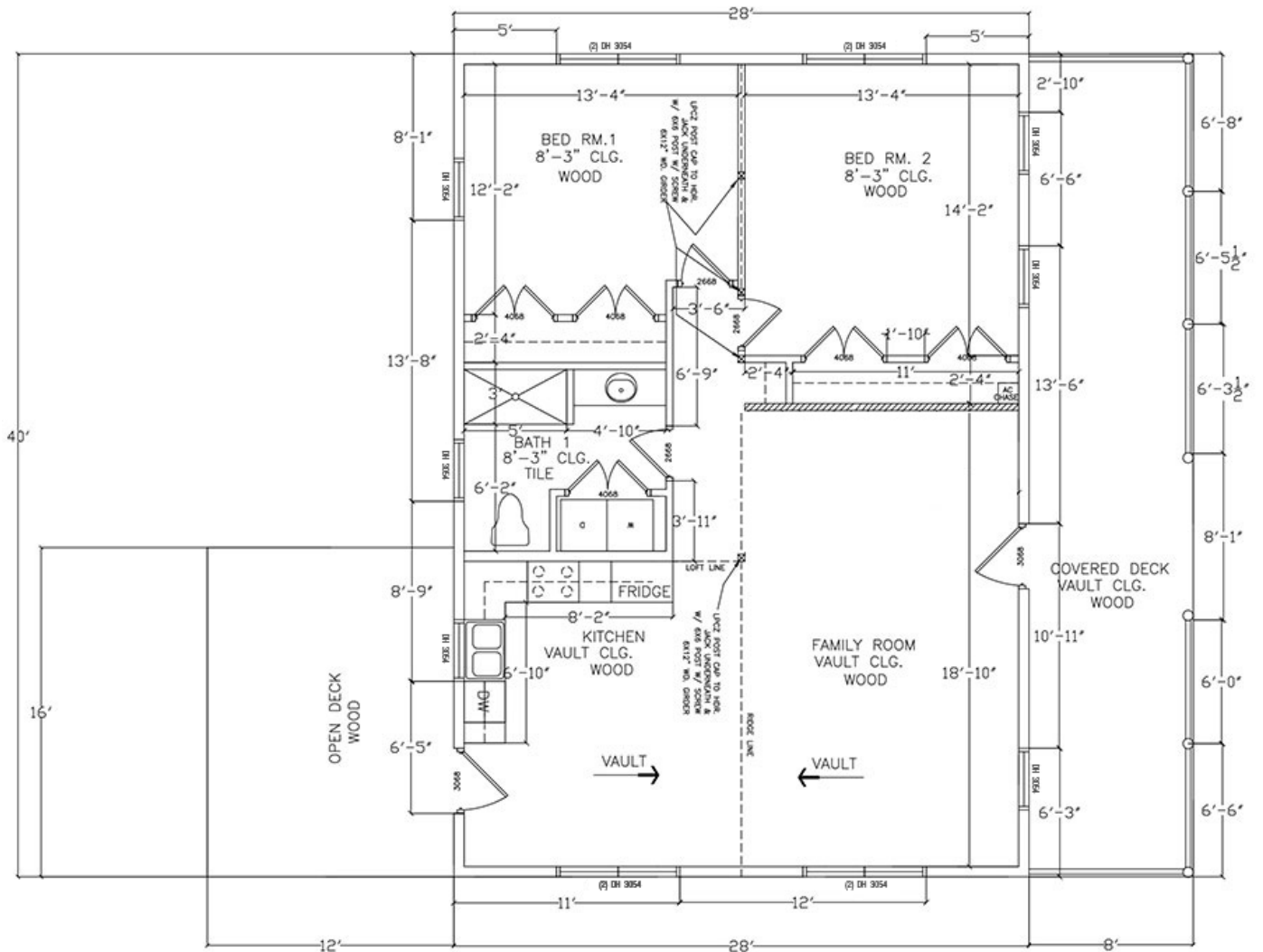
**40' long x 28' wide ■ Total Living 1,129 sq. ft.**

**Smoky Mountain Collection ■ Call for Pricing**

**Heritage Collection ■ Call for Pricing**

**Logs Only System ■ Call for Pricing**

**(423) 636-0045 ■ [www.logcabinsforless.com](http://www.logcabinsforless.com)**



**MAIN FLOOR PLAN**

# Windy Hill



**FRONT ELEVATION**

**1 Level ■ 1 Bedroom ■ 1 Bath**

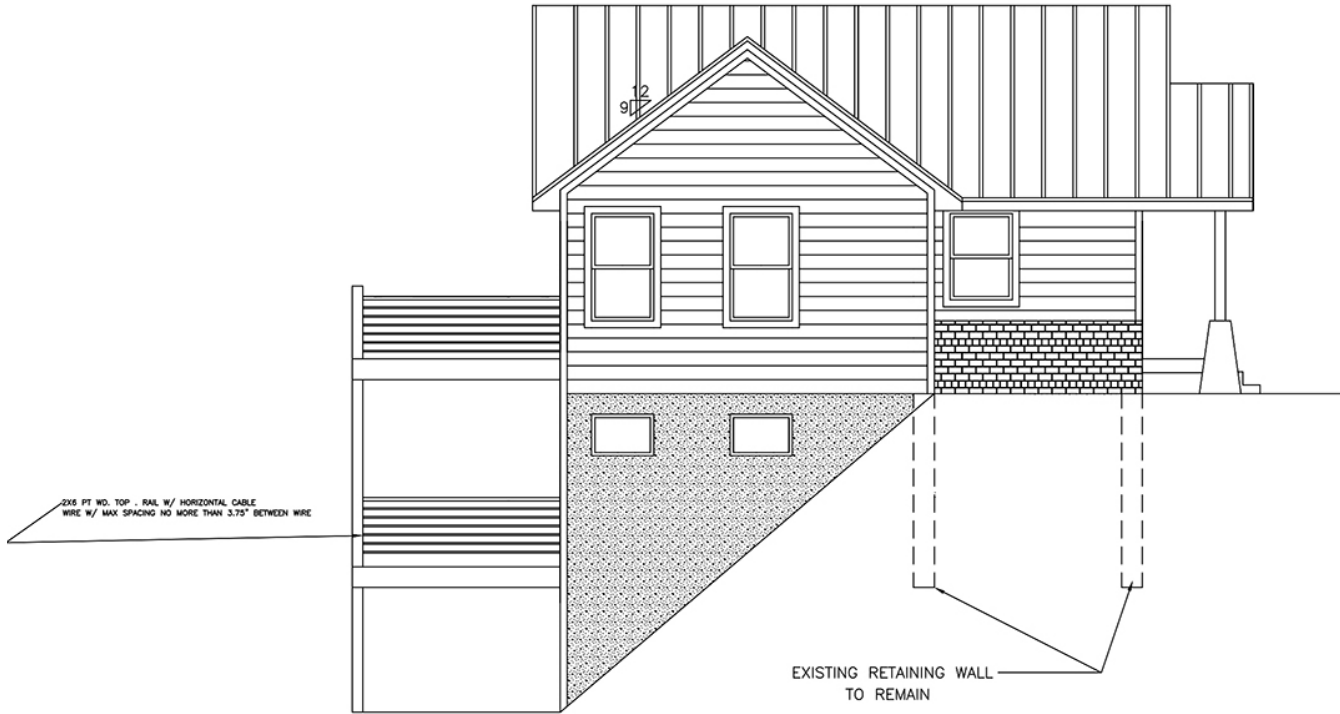
**38' long x 28' wide ■ Total Living 846 sq. ft.**

**Smoky Mountain Collection ■ Call for Pricing**

**Heritage Collection ■ Call for Pricing**

**Logs Only System ■ Call for Pricing**





**LEFT ELEVATION**